

# Using AI for research in the humanities

**November 21, 2025**

Lori Hennessy  
College of Fine Arts  
School of Music

# Presentation Highlights:

**Part 1:** Introduction

**Part 2:** About LLMs

**Part 3:** Using LLMs to assist in research

**Part 4:** Hands on application

# Introduction

- **Degree:** DMA student in performance, minor in music education, Third year.
- **Research:**
  - **Area:** String pedagogy / Cello pedagogy
  - **Type:** Historical
  - **Methodology:** Process–Tracing
  - **Perspective:** Critical / access oriented
- **Cohort member of the Fall 2025 Roots for Resilience program**



**Lori Hennessy**



**Michele Cosi**

**Research Data Scientist**



**Jeff Gillan**

**Research Data Scientist**

**Tina L. Johnson**  
**Organizational Development Specialist**  
**Office of the Chief AI officer**

# Roots for Resilience

[\*\*datascience.arizona.edu/r4r\*\*](https://datascience.arizona.edu/r4r)

- Interdisciplinary cohort of graduate students and PhD candidates.
- Supports student research with tools in AI and Open Science
- Supports student attendance and learning with stipends.

# What is “Open Science?”

**Transparency**

**Accessibility**

**Shareability**

# Open Science and the --- Humanities

**As open as possible,  
as closed as necessary**

- **Open Access**
- Open Data
- **Open Methods**
- Open Source Software
- Open Peer Review
- **Open Educational Resources**



**Open AI**



**ChatGPT**

**Anthropic**



**Claude**

**Google**



**Gemini**

# What are LLMs?

Large Language Models (LLMs)

are AI systems trained on

massive amounts of text to

recognize patterns in language

and generate human-like

responses.

# What do LLMs do well?

**1. Text Analysis**

**2. Summarizing and synthesizing**

**3. Advanced Source Searching**

**4. Interpreting / Clarifying Complex Ideas**

**5. Organizing information**

**6. Digital support**

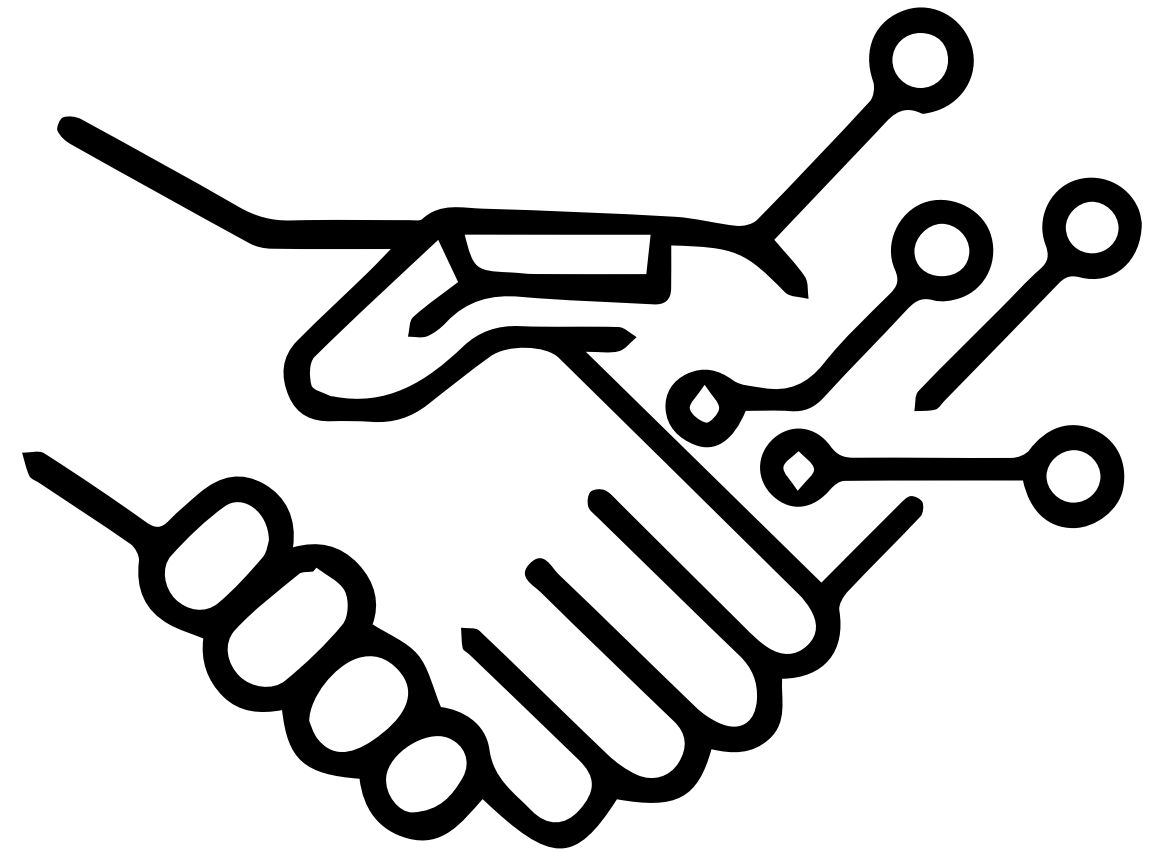


# Chat with a neighbor:

**How have you used LLMs  
to assist with your work?**

# The human in the loop:

**Keeping it ethical  
and accurate.**





Your student  
privilege.

## Getting Started:

1

Collect  
PDFs  
(up to 50!)

THE UNIVERSITY OF ARIZONA

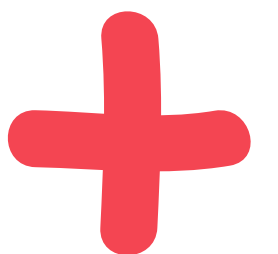


University Libraries

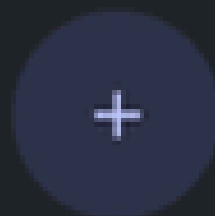
WeLib

2

Add them  
to a  
“notebook”



## Recent notebooks



Create new notebook



A Concise History of  
Women's Work

Nov 17, 2025 · 5 sources



Spiral Curriculum: Habits  
of Mind and Skills...

Nov 18, 2025 · 7 sources



Process Tracing:  
Causation and Levels o...

Nov 18, 2025 · 9 sources



Cello Technique:  
Principles and Forms of...

Nov 17, 2025 · 9 sources



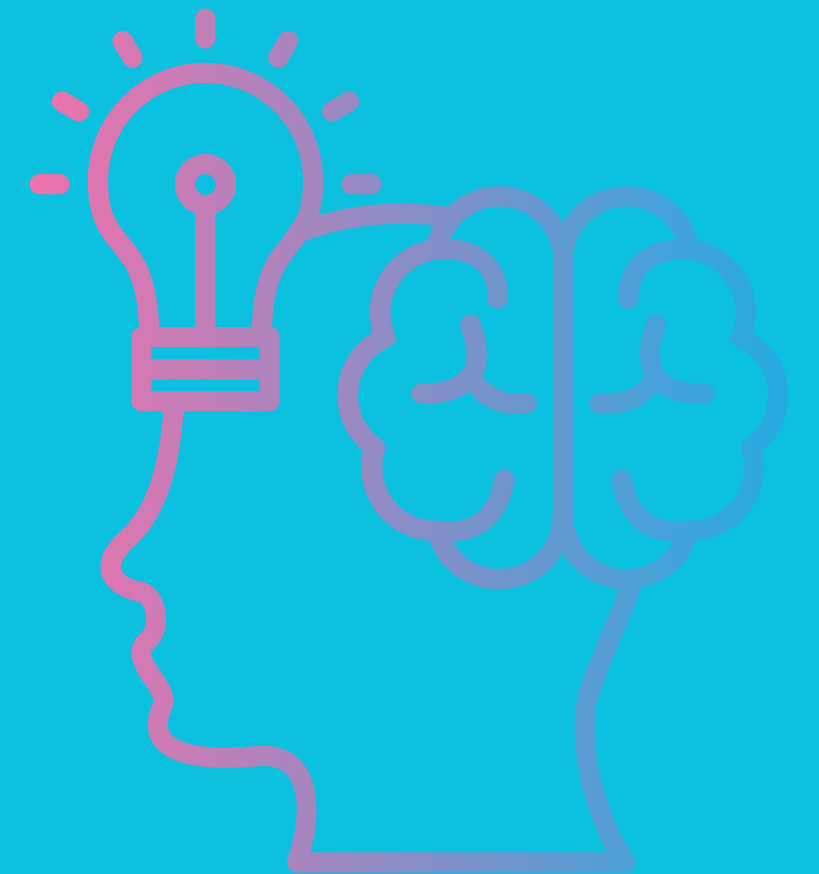
**Strategically create notebooks to get  
assistance with:**

**historical context, epistemological analysis, using  
frameworks, methodology, and more.**

# Epistemological Paradigm Analysis

Request a table  
or specify themes.

**Create a notebook with  
epistemological sources  
and the source you want to analyze  
to generate analysis.**





# Apply Methodology

Create a notebook with  
methodological sources and use  
AI to gain clarity on those  
sources or apply them to a  
different text.



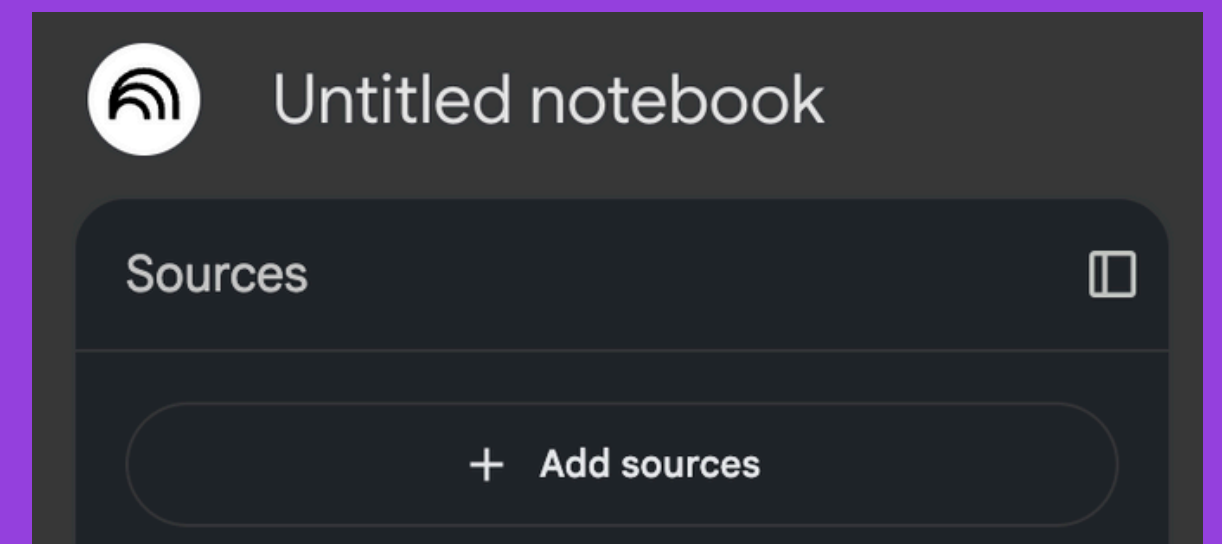
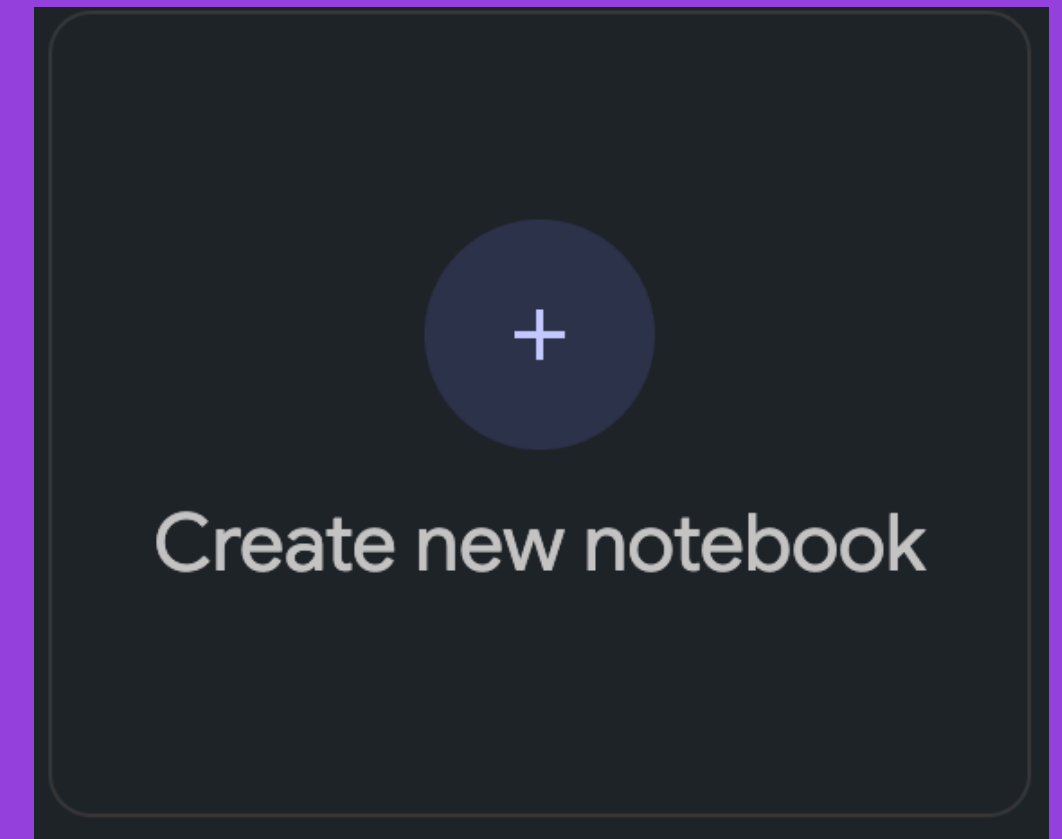
# Generate an outline for an article

Create a notebook with the  
source you want to criticize and  
the sources you want to use to  
aid in that criticism.



# Let's try this together!

1. **Open your computer.**
2. **Go to [notebooklm.google.com](https://notebooklm.google.com)**
3. **Sign in with your UofA credentials.**
4. **Start creating a notebook.**
5. **Generate an outline!**





THANK  
YOU

Any questions?